



Metric Series Brakes

PMB

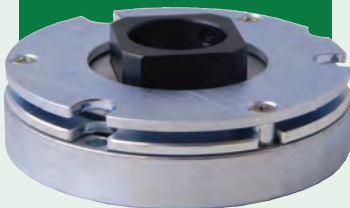


The permanent magnet electromechanical power-off brake has a true zero backlash hub with a very fast response time. The PMB can provide dynamic braking as well as static holding, has a high torque density-to-size ratio and is also RoHS compliant. The PMB can also include a long or short hub with a large through bore.

Specifications

- 28 to 161 mm diameter; 29 to 91 mm length
- Bore sizes from 6 to 40 mm
- Static torque from 0.4 to 140 Nm
- 24 VDC coil voltage
- Dry operation
- Modified designs and customized assemblies available

UTSEB



The ultra-thin spring-engaged, electromagnetic power-off brake offers a low backlash hub and is the thinnest profile power-off brake available in the market. The short package size allows the brake to be easily mounted to the front or rear of a motor. Equipped with PWM controller to reduce heat and save energy for continuous duty applications. The UTSEB is also RoHS compliant.

Specifications

- 26 to 71 mm diameter; 12 to 19 mm length
- Bore sizes from 5 to 20 mm
- Static torque from 0.06 to 3.2 Nm
- 24 VDC coil voltage for 0.5 sec max; 7 VDC holding voltage with PWM controller
- Dry operation
- Modified designs and customized assemblies available

Metric Series Brakes

TSEB

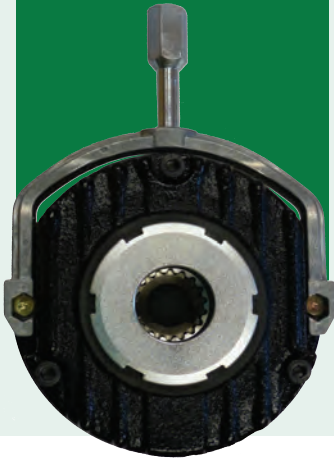


The thin spring-engaged power-off brake is electromagnetically released and has a relatively thin profile compared to normal spring-engaged brakes. This feature -- along with being RoHS compliant -- makes them a perfect candidate for a variety of applications while providing a good torque-to-size ratio.

Specifications

- 35 to 187 mm diameter; 20.8 to 70.8 mm length
- Bore sizes from 4 to 32 mm
- Static torque from .01 to 200 Nm
- 1800 to 5500 RPM max speed
- Dry operation
- Modified designs and customized assemblies available

MSEB



The motor spring-engaged power-off brake is designed to easily mount to a motor or frame. The brake includes a manual release lever which provides an override in the absence of power and a dust cover to help keep the friction surface free of debris. A torque adjustment collar also allows the torque to be manually adjusted based on the application.

Specifications

- 83 to 302 mm diameter; 41 to 119 mm length
- Bore sizes from 11 to 45 mm
- Static torque from 4 to 480 Nm
- Optional indicator micro switch available
- 24 VDC coil voltage
- Dry operation
- Modified designs and customized assemblies available

SSB



The single surface electromagnetic power-on brake has a zero backlash hub, can provide dynamic braking as well as static holding and can operate at higher speed (RPM). The friction surfaces will provide long life and the brake has a high torque-to-size ratio. The SSB series is also RoHS compliant.

Specifications

- 31 to 250 mm diameter; 26 to 102 mm length
- Bore sizes from 6 to 40 mm
- Static torque from 5 to 350 Nm
- 24 VDC coil voltage
- Dry operation
- Modified designs and customized assemblies available

(607) 732-2030 | www.sepac.com